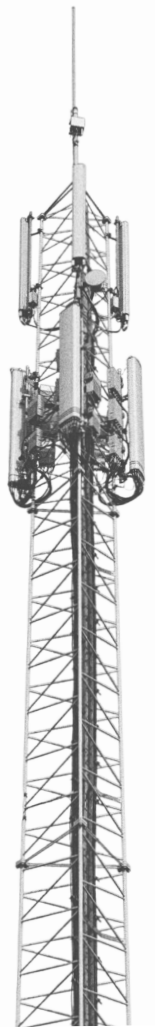


HEXYLON



THE MOST VERSATILE PORTABLE ANALYZER ON THE MARKET
HAS NOW A POWERFUL 5G/4G SIGNAL ANALYZER

5G



ALL THE EXPERTISE ON HEXYLON, NOW APPLIED TO 5G ANALYSIS!

5G/4G DETECTION

- 5G detection (subcarrier spacing 15 kHz and 30kHz)
- 4G detection
- SSB spectrum display
- Operator identification and CellID
- 5G SA/NSA mode display
- Full treeview available of decoded signalling information (MIB, SIB)

BEAM ANALYSIS

- Detection of multiple PCIs available on same frequency
- RSRP measure of every beam
- Time and distance analysis of every beam using internal GPS for reference

DRIVE TEST MODE

- Multiple channels selection
- Interval selection (time/distance)
- Web display of map with measures of detected PCIs

HIGHLIGHTS

- All in one view with up to 6 widgets to see all the information at one
- Beams identification with distance and historical measurements display
- Advanced map presentation of drive test records, with PCI/Channel/Power filtering
- Internal repository of 5G/4G bands frequencies up to release 17
- Scan and learning plan of selected 5G/4G bands
- Advanced spectrum with waterfall

DESIGNED FOR FIELD USE

✓ Compact and lightweight

Weight: 2150g
Dimensions: 220mmHx260mmWx65mmD

✓ Portable and ergonomic

Perfect for on-the-go use

✓ Operating on 8" multitouch screen

Everything flows intuitively through naturalness in the gestural commands

✓ Mosaic exclusive feature

With up to 6 widgets fully customizable by user

✓ Field-replaceable and separately rechargeable battery

Ideal for technicians who need to work in remote locations where there is no access to a power outlet

✓ "Cloud" integrated management environment

Which allows technicians to easily store and access measurement data in the cloud, making it easy to share and collaborate with other team members

GSERTEL

