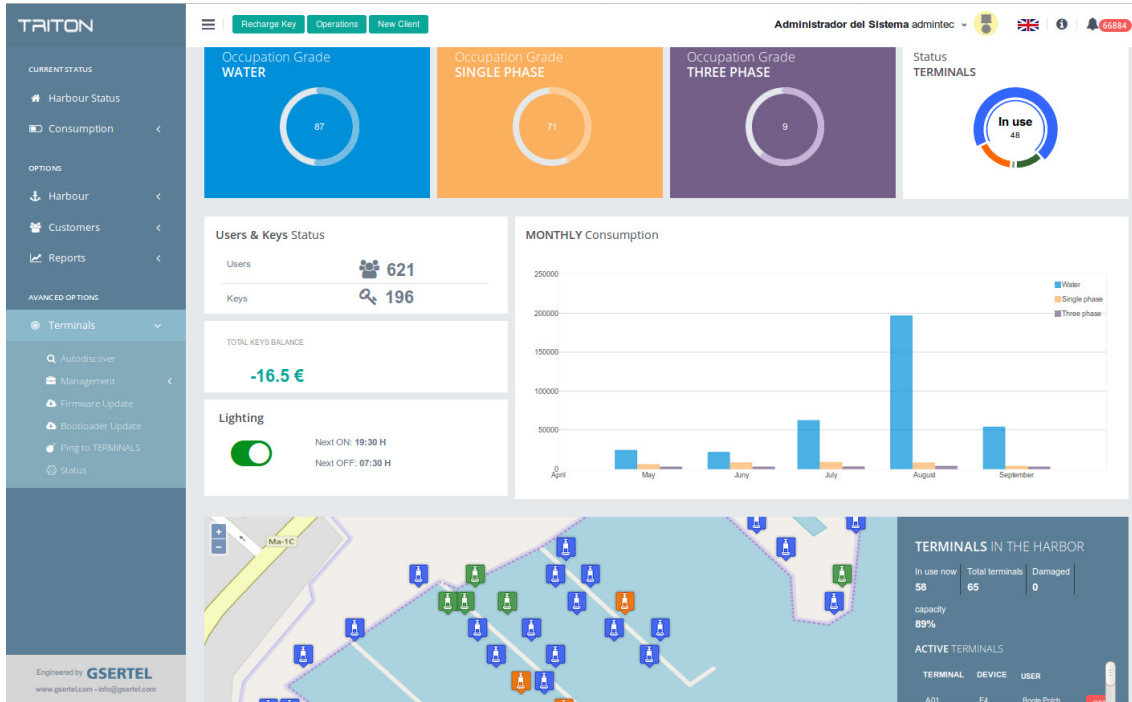


# Harbour Supplies Management System

# TRITON SGSP



## Powerful and intuitive supplies management system

### Description

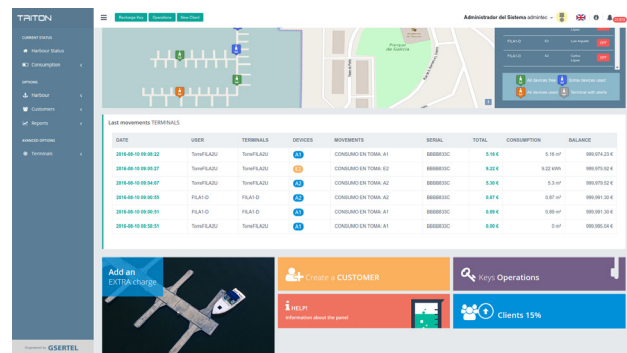
- Harbour supplies management system
- Multi-platform Web Application
- Hardware server included
- RFID card reader included
- Multi-protocol communications: Ethernet, Optical fiber, Wireless or 3G/4G

### General

- Multitenant platform with configurable user profiles
- Restricted access by user login and password
- Pedestal remote firmware update
- Prepaid, postpaid or simultaneous working modes
- Hierarchical management of multiple harbours (option)

### Supplies Management

- Real time and historical monitoring of consumptions by pedestal
- Remote ON/OFF for electricity and water outlets
- Automatic report of customer operations
- Individualised language setup for each user



# Harbour Supplies Management System

## Harbour Data

- Harbour data settings
- Interactive map configuration
- Supply pedestals registration/cancellation
- Multiple rate settings
- Electricity and water meter management
- Pedestal lighting user setup

## Customer Management

- Customer database
- RFID card management
- Prepaid card recharge
- Additional services charge (gasoil)
- Post-payment option and credit limit
- Printed ticket for each operation
- User credentials for remote application (optional)

## Billing and Reporting

- Customer activity reports and billing
- User token recharge reports
- Users with negative balance reports
- Electricity and water meters reports
- Detailed consumption reports
- Data import and export for integration with pre-existing harbour management software

## Alarms Monitoring

- Communication failure detection
- Magneto-thermic cut-off detection
- Electricity anti-theft detection
- Water leakages detection
- Electrovalve failure detection
- Meters failure detection
- Hardware failure
- Overheat detection

## Highlighted Features

- Automatic reconnection of outputs when a brownout occurs. The system keeps the active users, the active devices and the balances
- Individual electricity anti-theft detectors
- Alarm detection sent by SMS or email
- Customer login via RFID encrypted token or Smartphone/Tablet (optional)
- Remote services activation/deactivation
- Global access and full management capabilities via Internet
- Automatic switches drop-off detection
- Automatic language switching

