

RCS 100

DAB



HIGHEST PERFORMANCE WITH AN INTUITIVE MANAGEMENT

ADVANCED REAL TIME MONITORING OF 2 MUX OVER EDI, 2 OVER ETI AND 2 OVER RF INPUTS



PROFESSIONAL MONITORING:

RF ANALYSIS

- Real Time spectrum
- Signal quality measurements: Power, C/N, SNR, FIC MER, MSC MER, FIC BER, MSC BER, shoulders
- Echoes
- Alarm log (real time) and representation (time evolution)

DAB ANALYSIS

- Services Bitrate
- MOT Decoder (SlideShows)
- Manual ETI Recording
- Manual individual audio service Recording, both MPEG2 (DAB) or AAC (DAB+) formats
- Services treeview
- ETI and EDI Analysis

AND MUCH MORE...

- Spectrum mask according to ETSI EN 302 077
- Local display of measurements and alarms
- 1 RF input and 1 ETI input
- Ethernet connectivity
- 1 PPS & 10 MHz synchronization inputs
- HTML5 control application
- SNMP v2.0 alarms
- FIG Tables

OPTIONAL FEATURES

- ✓ [Additional RF INPUT](#)
- ✓ [Additional ETI INPUT](#)
- ✓ [Constellation Diagram](#)
- ✓ [SFN Drift](#)
- ✓ [Internal GPS](#)
- ✓ [ETI-LI Recording by alarm](#)
- ✓ [Individual audio service Recording by alarm](#)
- ✓ [Live Audio Streaming over IP](#)
- ✓ [Ability to analyse up to 2 EDI inputs in parallel](#)

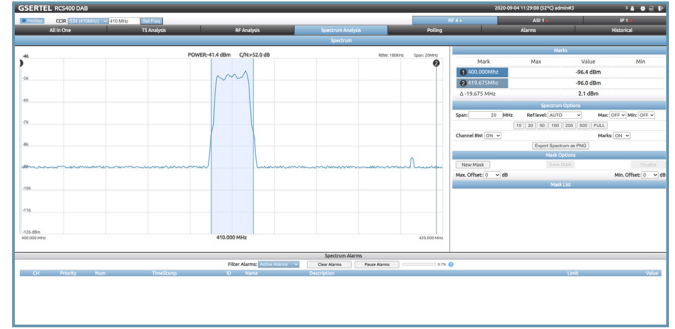
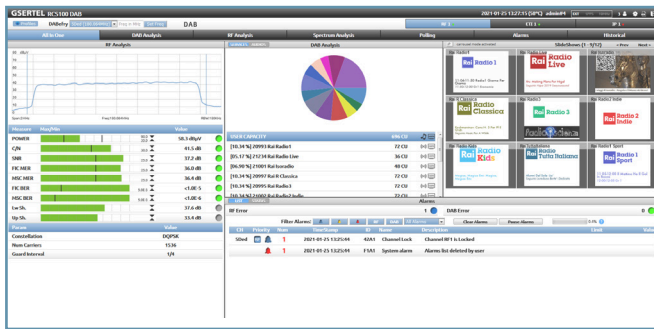
GSETEL

RCS 100

ADVANCED REMOTE MONITORING SYSTEM FOR DAB/DAB+



MANAGEMENT SYSTEM



ALL IN ONE

Shows an overview of the channel status on one screen. It shows spectrum, services, measurements, alarms. All integrated in a single view for quick analysis

FULL SPECTRUM (OPT.)

Represents realtime spectrum of the monitored channel with detailed measurements, mask, max. and min. hold features

GENERAL SPECIFICATIONS

Display	Graphic LCD STN. Resolution:256x64
Format	1U 19" rackable unit
Weight	3250 g.
Dimensions	448x380x43.3mm
Operating temperature	-5°C to 45°C (23°F to 104°F)
Storage temperature	-20°C a 70°C (-4°F a 158°F)
Humidity	5% to 95% non-condensing
Interfaces	Web and keyboard
Power supply	100-240 VAC 50-60MHz 1.4A / 12VDC
Storage capacity	SSD 256 GB
Internal GPS	Option 902566

GSERTEL



Frequency

Range	168 – 240 MHz (Demodulation) 47-1000MHz (Spectrum)
Resolution	100 KHz
Tuning	Channel and frequency

Inputs

RF	1 x N Female 50Ω connector (Option 1 extra RF input)
ETI	1 x BNC 75Ω connector (Option 1 extra ETI input)
Synchro	1 x 1pps BNC 50Ω connector 1 x 10MHz BNC 50Ω connector

Spectrum Analyzer

Span	10, 20, 50, 100, 200, 500, 1000 MHz
Scale	-100 dBm to 20 dBm
Max. and Min. Hold	√
Marks	2
Mask	√
Spectrum mask according to ETSI EN 302 077	√

RF Analyzer

Demodulation	ETSI EN 300 401, ETSI TS 102 563, ETSI TR 101 496
U.A.L. Technology (Universal Auto Lock)	Automatic detection of signal characteristics and modulation parameters
Power	-95 dBm to +15 dBm
C/N	Up to 40 dB
SNR	Up to 40 dB
MER	FIC MER: Up to 40dB MSC MER: Up to 40dB
BER Measurements	FIC BER: 9.9E-2 – 1.0E-5 MSC BER: 9.9E-2 – 1.0E-6



RF Analyzer

Left Shoulder	< 45 dB
Right Shoulder	< 45 dB
Accuracy	+/- 2dB
Resolution	0.1 dB
Constellation Diagram	Option 902591
Echoes	Option 902591
SFN Drift Graphs	Option 902591

DAB Analysis

Services Bitrate	√
MOT Decoder (SlideShows)	√
Tree View	√
Live Streaming of the selected service	Option 902520
Manual ETI Recording	Option 902519
Alarm ETI Recording	Option 902519
ETI Analysis	√
EDI Analysis	Option 902518

Alarms

Configurable type of alarm (Info, Warning, Error)	√
ETI recording by alarms	Option 902591
System alarms	Temperature, Power supply (only for RCS with double power supply), fan failure, and alarms deletion